

1. Feature

- ✧ Used as an warning device to generate fire alarm;
- ✧ Installation and wiring same as detector base;
- ✧ Driven by detection circuit, no need for extra power line. Two adjustable modes, sharing the same address of detector, or occupying an individual address.



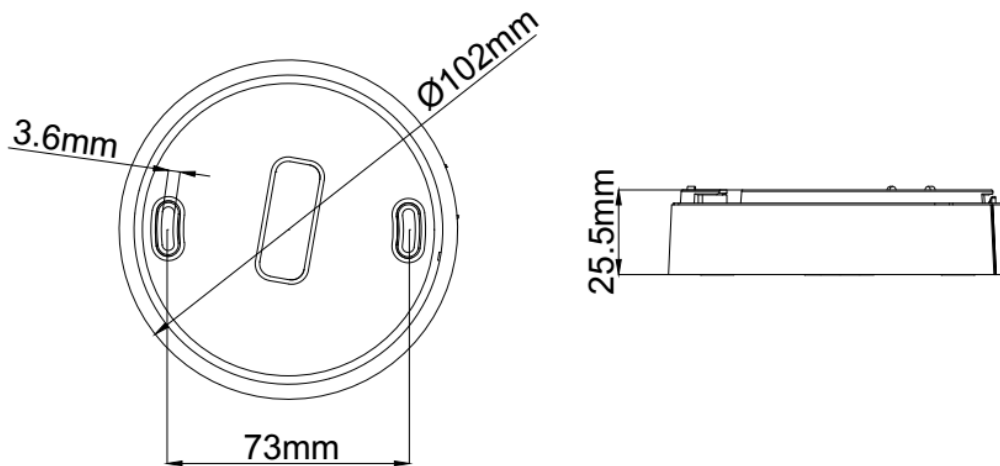
2. Description

VG-6617S Digital Alert Base is designed for the application inside a closed room. As a warning device, the base will generate alarm sound when the detector detects a fire occurred. Installed as a base, it is compatible with the range of digital detectors. For application, when sharing the same address with detector, the alert base will be triggered by that detector installed. Setting with an individual address, the alert base can be as used a field warning device and activated by C&E Logic. It is usually installed in hotel room, residential bedroom or other locations that are far away from the audible and visual alarm.

3. Technical Data

Operating voltage:	Loop voltage: 24V /Allowance range: 15V~28V (Vp-p)
Operating current:	Standby current: $\leq 0.2\text{mA}$
	Action current: $\leq 3\text{mA}$
	Total starting current at alarm state both for the detector and alert base $\leq 3.5\text{mA}$ (maximum 20 pieces triggered at exactly the same time)
Address	1~254
Sound level	>75dB
Tonal modification cycle	0.4~0.6S
Temperature:	-10°C~+55°C
Relative humidity	$\leq 95\%$, non-condensing
Weight	67g
Shell material and color	ABS+PC, White
Dimension	diameter of 102mm, height of 25.5mm
Installation hole distance	73mm
Wiring: directly connected with the detection loop of the control panel.	

4. Dimension



5. Status Indication

- Polling: The red indicator flashing with no audible alarm.
- Alarm: The red indicator is off with an audible alarm.
- Fault: The red indicator is off with no audible alarm.

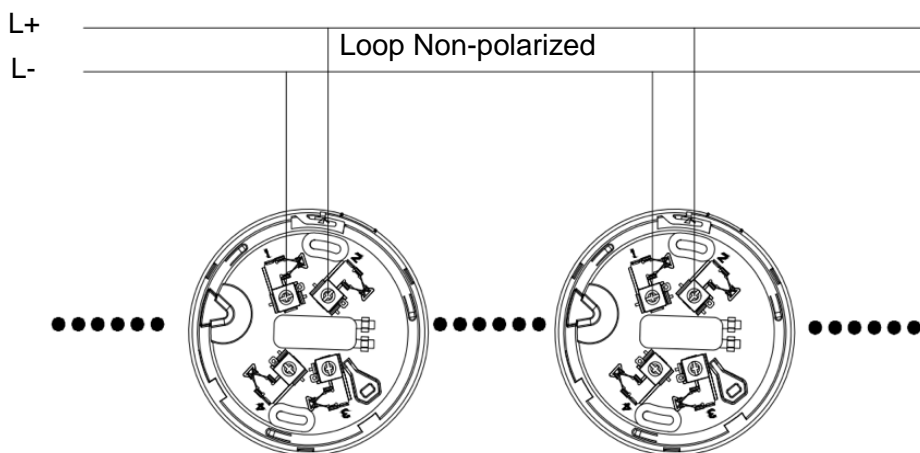
6. Installation and Wiring

1) The flame resistant twisted-pair **ZR-RVS-2x1.0~1.5mm²** is recommended to be used for the wiring.

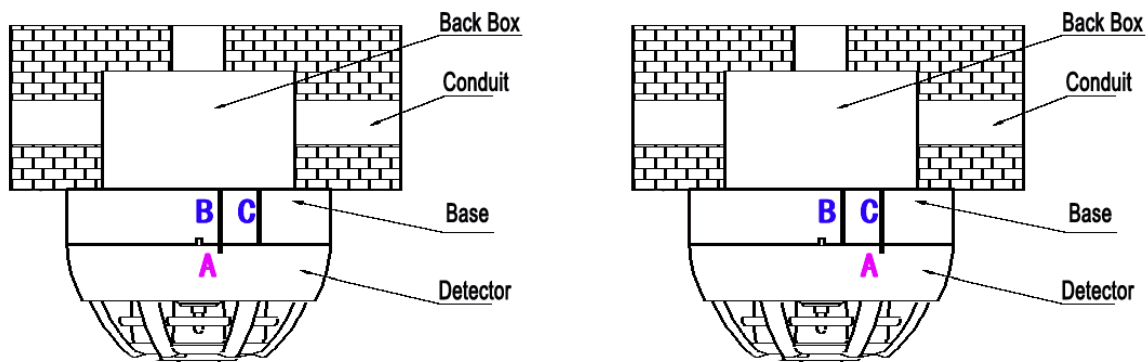
2) Before the installation, please check whether the shell is intact without any damage, and whether the label is complete.

3) Alert base terminals wiring diagram: The terminals labeled as 1 and 2 on the alert base shall be connected with the detection loop.

(L+, L-: the detection loop terminal, non-polarized. The 1 and 2 terminals of the alert base shall be connected with L+ and L-, respectively.)



4) The alert base and detector shall be installed as the following diagram:



Step 1: Align Sign A of the detector body with Sign B of the base.

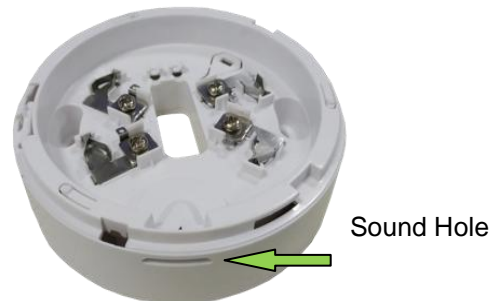
Step 2: Rotate the detector clockwise until Sign A is aligned with Sign C, then the installation is finished.

5) During the installation, the sound hole shall aim at an open space without any obstacle or foreign matter blocking it.

Warning:

Before installing the device, please turn off the power of the control panel.

The installation location shall be free from rain or moisture, and direct sunlight shall be avoided



7. Usage and Operation

Addressing: The digital programmer VG-6537 can be used for program the address. For addressing, connect the programmer with the detection loop terminal, input the address code of the alert base (1- 254), and press the “Writing” button. (The detailed info is available in *VG-6537 Digital Programmer User Manual*.)

Mode setting: There are two adjustable address modes available, sharing the same address with detector or occupying an individual address. (the default mode from the factory is sharing the same address with detector.)

Same address mode: The alert base and detector use the same circuit address. If the detector sends an alarm, the alert base connected with it will send an audible alarm.

Individual addresses mode: The alert base and the detector each occupy one circuit address. Used as an warning device, the application is similar to an sounder such as VG-6737 Digital Sounder Beacon. C&E logic can be programmed between the alert base and detection devices such as digital detectors. If the detector sends an alarm, the alert base relevant to it will send an audible alarm.

The two modes shall be switched by the programmer. (The detailed info is available in *VG-6537 Digital Programmer User Manual*.)

Silence: Resetting the control panel can silence the alarm of the alert base.

Attention: The total starting current at alarm state for the detector and alert base $\leq 3.5\text{mA}$. Please

reference the following table:

Detection loop(Detector + Alert Base) Load Quantity	Staring Quantity of Detector + Alert Base Alarm at the same time
≤254 Pieces	≤20 Pieces
≤128 Pieces	≤30 Pieces

8. Attentions

- 1) If the alert base alarm cannot be started, inspect whether the alert base is damaged.
- 2) The staff on duty shall be familiar with the operation procedure of the device, and shall avoid incorrect operations.
- 3) This alert base is a kind of fire production product. During the usage, the duty system, the shift handover and takeover system shall be implemented strictly. And the running record shall be well done.
- 4) After the alert base is put into service, it shall be inspected regularly. And the function test is suggested to be performed at least once half a year.



Company: V-GREAT GLOBAL CORPORATION
 Add.: Second Floor, Capital City, Independence Avenue,
 P.O. Box 1008, Victoria, Mahe, Seychelles

Web: <http://www.vgreatglobal.com> Email: tech@vgreatglobal.com